





# EXHIBIT A

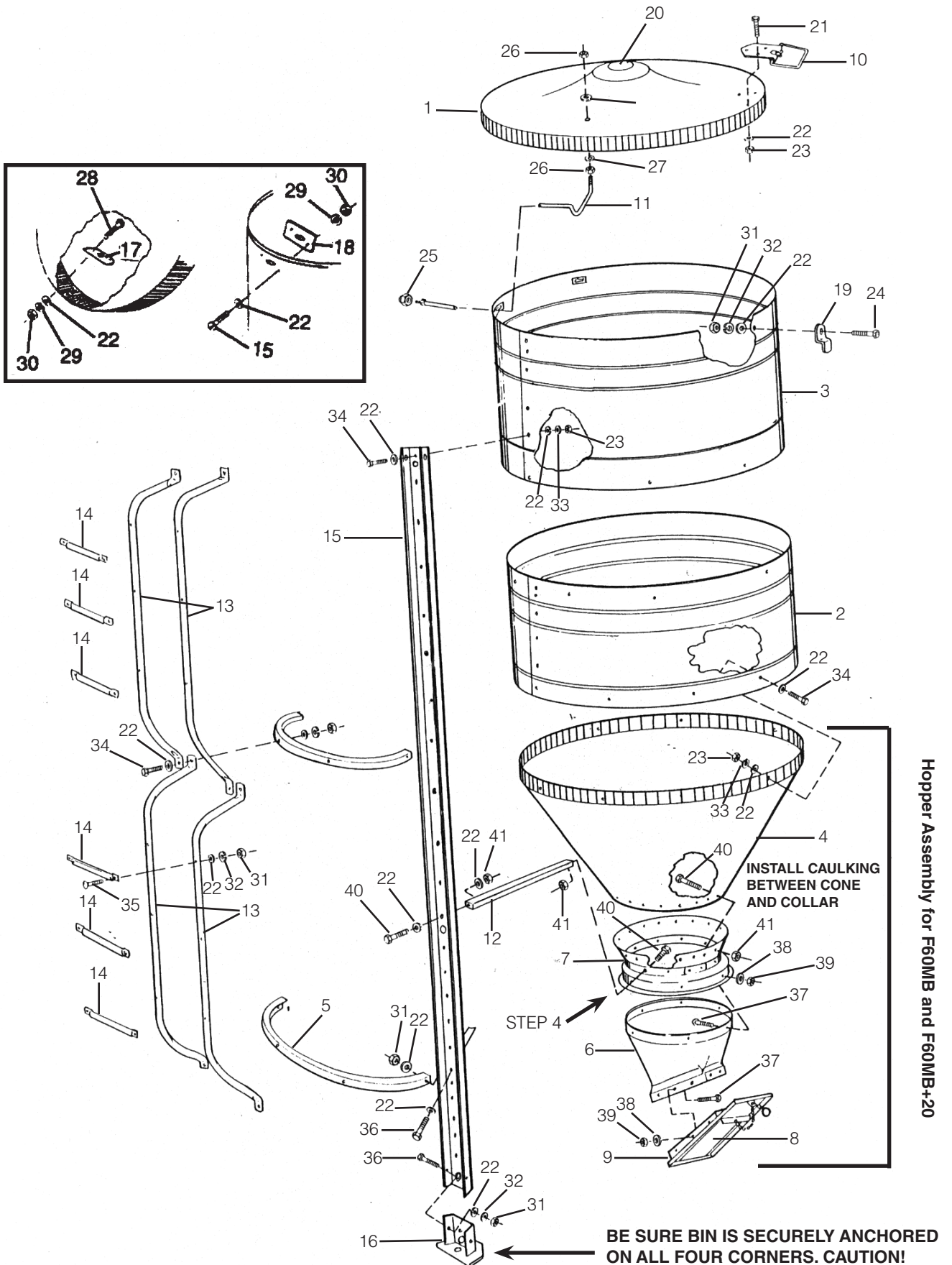
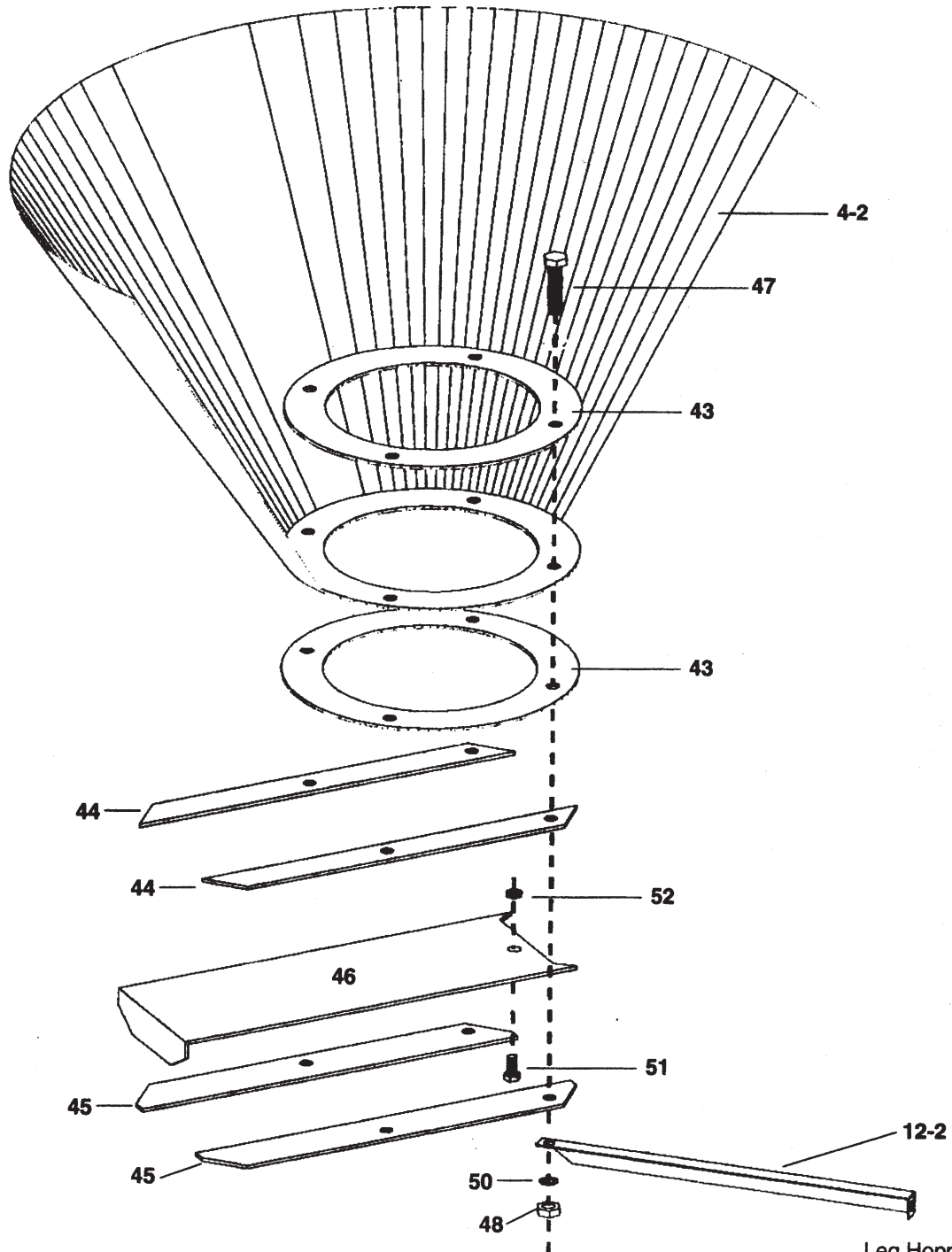




EXHIBIT C  
Slide Gate Assembly  
for MBSLGT and MBSLGT +20

EXHIBIT C  
Slide Gate Assembly  
for MBSLGT and MBSLGT+20



Leg Hopper Brace  
attaches to leg using Ref.  
No. 49  $\frac{3}{8}$  x 1 Bolts, Ref.  
No. 50  $\frac{3}{8}$  Lockwashers  
and Ref. No. 48  $\frac{3}{8}$  Nuts.



